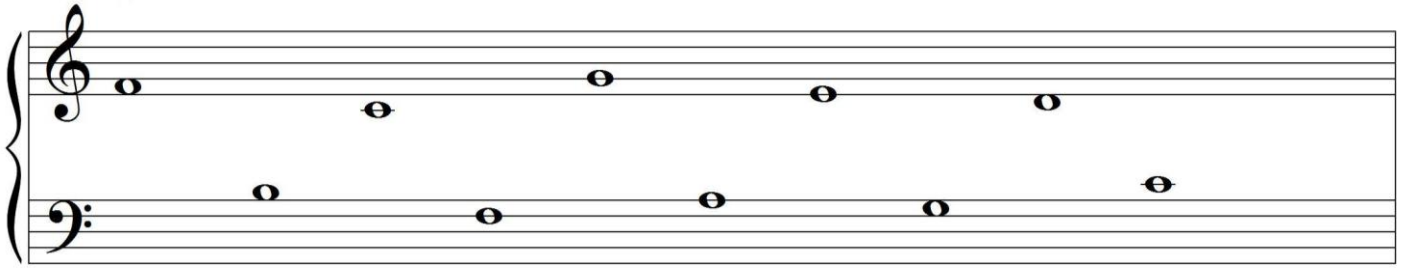
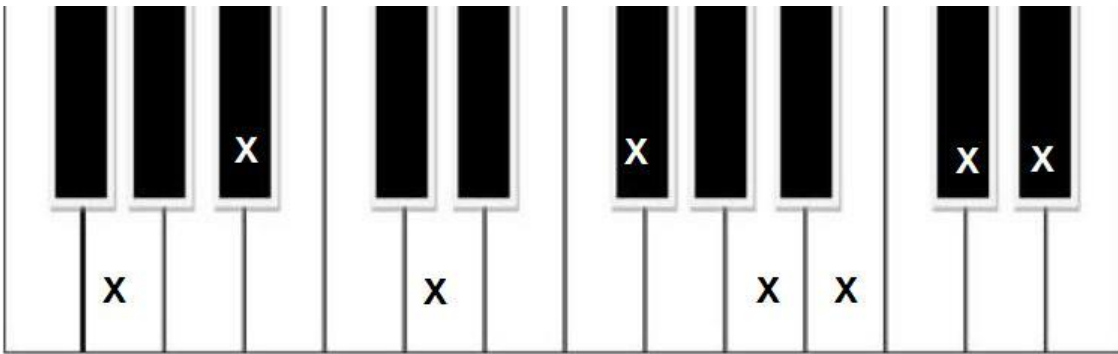


Write the letter name of each note.



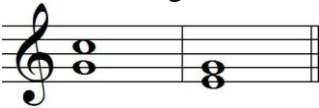
\_\_\_\_\_

Write the letter name of each key that is marked with an X.



\_\_\_\_\_

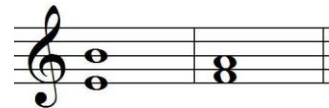
Circle the larger interval.



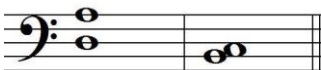
Circle the step.



Circle the 5<sup>th</sup>.



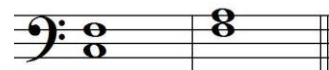
Circle the smaller interval.



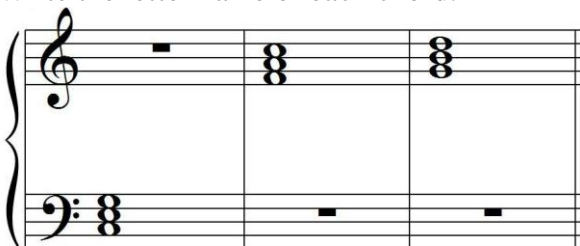
Circle the skip.



Circle the 3<sup>rd</sup>.



Write the letter name of each chord.



\_\_\_\_\_

Draw the note and tell how many beats each has with 4/4 time signature.

Dotted half note \_\_\_\_\_

Half note \_\_\_\_\_

Whole note \_\_\_\_\_


Quarter note \_\_\_\_\_

Write the letter of the correct answer in the blank.

\_\_\_\_\_ Time signature

A. 

\_\_\_\_\_ Treble clef

B. 

\_\_\_\_\_ Bass clef

C. 

\_\_\_\_\_ Sharp

D. 

\_\_\_\_\_ Flat

E. *p*

\_\_\_\_\_ Quarter rest

F. 

\_\_\_\_\_ Loud

G. 

\_\_\_\_\_ Soft

H. *f*

\_\_\_\_\_ Repeat sign

I. 

